



## TEST REPORT

No. : SHIN160903107CCM

Date : Sep. 14, 2016

Page: 1 of 6

CORONET GROUP SUZHOU CO., LTD.  
#1505 SIFC, SUZHOU, CHINA

The following sample(s) was/ were submitted and identified on behalf of the client as:

Sample Name : FRAME  
Sample Number : SHIN160903107CCM  
Test Required : Compression test of system scaffold assemblies  
Test Method : ANSI/SSFI SC100-5/05  
Product specification : 3'\*6'8"  
Date of Receipt : Sep. 02, 2016  
Test Period : Sep. 02, 2016 to Sep. 12, 2016  
Test result(s) : For further details, please refer to the following page(s)

\*\*\*\*\* To be continued\*\*\*\*\*

Signed for SGS-CSTC Standards  
Technical Services (Shanghai) Co., Ltd.

Tiffany Liu  
Authorized signatory



SGS-CSTC Standards Technical Services (Shanghai) Co., Ltd.  
Testing Center Commercial Construction Material Laboratory

Unless otherwise agreed in writing, this document is issued by the Company subject to its General Conditions of Service printed overleaf, available on request or accessible at <http://www.sgs.com/en/Terms-and-Conditions.aspx> and, for electronic format documents, subject to Terms and Conditions for Electronic Documents at <http://www.sgs.com/en/Terms-and-Conditions/Terms-e-Documents.aspx>. Attention is drawn to the limitation of liability, indemnification and jurisdiction issues defined therein. Any holder of this document is advised that information contained hereon reflects the Company's findings at the time of its intervention only and within the limits of Client's instructions, if any. The Company's sole responsibility is to its Client and this document does not exonerate parties to a transaction from exercising all their rights and obligations under the transaction documents. This document cannot be reproduced except in full, without prior written approval of the Company. Any unauthorized alteration, forgery or falsification of the content or appearance of this document is unlawful and offenders may be prosecuted to the fullest extent of the law. Unless otherwise stated the results shown in this test report refer only to the sample(s) tested and such sample(s) are retained for 30 days only.

Attention: To check the authenticity of testing / inspection report & certificate, please contact us at telephone: (86-755) 8307 1443, or email: [CN.Doccheck@sgs.com](mailto:CN.Doccheck@sgs.com)

No.69, Block 1159, East Kang Qiao Road, Pudong District, Shanghai, China. 201319 t (86-21) 61196300 f (86-21) 61191853/68183920 www.sgs.com.cn  
中国·上海·浦东康桥东路1159弄69号 邮编: 201319 t (86-21) 61196300 f (86-21) 61191853/68183920 e [sgs.china@sgs.com](mailto:sgs.china@sgs.com)

# TEST REPORT

No. : SHIN160903107CCM

Date : Sep. 14, 2016

Page: 2 of 6

Sample information :

Components	Number in one test	Actual unit Mass (kg)
3' × 6' 8" Fame	6	16.21
Cross brace	6	4.60
Base Jack	4	5.52
U-head	4	7.18
Ledger	6	2.63

Test conducted: ANSI/SSFI SC100-5/05 Standards for Testing and Rating Scaffold Assemblies and Components.

The frame scaffolding installed as per client's requirement shall be tested one bay wide and one bay long, by three lifts high to arrive an maximum post load. The load shall be applied distributed on four posts through loading beams. The frame scaffolding is erected into above configuration composed of four vertical posts with adjustable leg and U-head extended to 12 inches and with normal cross brace installed as showed in the following figure.

\*\*\*\*\* To be continued\*\*\*\*\*



SGS-CSTC Shanghai Technical Services (Shanghai) Co., Ltd.  
Testing Center Commercial Construction Material Laboratory

Unless otherwise agreed in writing, this document is issued by the Company subject to its General Conditions of Service printed overleaf, available on request or accessible at <http://www.sgs.com/en/Terms-and-Conditions.aspx> and, for electronic format documents, subject to Terms and Conditions for Electronic Documents at <http://www.sgs.com/en/Terms-and-Conditions/Terms-e-Documents.aspx>. Attention is drawn to the limitation of liability, indemnification and jurisdiction issues defined therein. Any holder of this document is advised that information contained hereon reflects the Company's findings at the time of its intervention only and within the limits of Client's instructions, if any. The Company's sole responsibility is to its Client and this document does not exonerate parties to a transaction from exercising all their rights and obligations under the transaction documents. This document cannot be reproduced except in full, without prior written approval of the Company. Any unauthorized alteration, forgery or falsification of the content or appearance of this document is unlawful and offenders may be prosecuted to the fullest extent of the law. Unless otherwise stated the results shown in this test report refer only to the sample(s) tested and such sample(s) are retained for 30 days only.

Attention: To check the authenticity of testing / inspection report & certificate, please contact us at telephone: (86-755) 8307 1443, or email: [CN.Doccheck@sgs.com](mailto:CN.Doccheck@sgs.com)

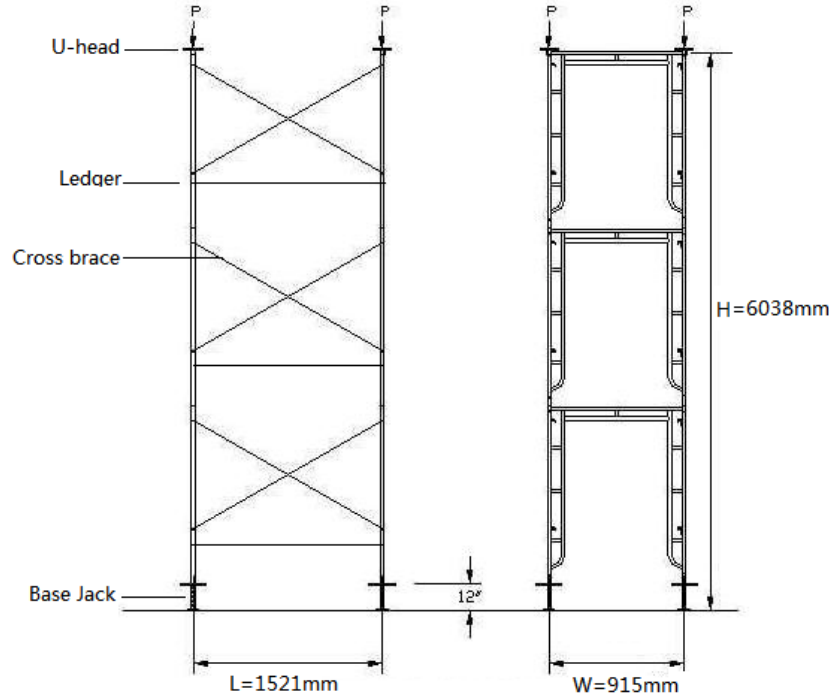
No.69, Block 1159, East Kang Qiao Road, Pudong District, Shanghai, China. 201319 t (86-21) 61196300 f (86-21) 61191853/68183920 www.sgs.com.cn  
中国·上海·浦东康桥东路1159弄69号 邮编: 201319 t (86-21) 61196300 f (86-21) 61191853/68183920 e sgs.china@sgs.com

## TEST REPORT

No. : SHIN160903107CCM

Date : Sep. 14, 2016

Page: 3 of 6



Test schematic (Series A test)

Test result:

Sample No.	Maximum load(lbs)	Load (lbs) per Post	Load(lbs) per post at 4:1 safety factor	Deviation from average (%)
1	30977	7744	1936	1.5
2	30504	7626	1906	0.0
3	30054	7514	1878	1.5
Average	30512	7628	1907	--

\*\*\*\*\* To be continued \*\*\*\*\*



SGS-CSTC Shanghai Technical Services Co., Ltd.  
Testing Center Commercial Construction Material Laboratory

Unless otherwise agreed in writing, this document is issued by the Company subject to its General Conditions of Service printed overleaf, available on request or accessible at <http://www.sgs.com/en/Terms-and-Conditions.aspx> and, for electronic format documents, subject to Terms and Conditions for Electronic Documents at <http://www.sgs.com/en/Terms-and-Conditions/Terms-e-Documents.aspx>. Attention is drawn to the limitation of liability, indemnification and jurisdiction issues defined therein. Any holder of this document is advised that information contained hereon reflects the Company's findings at the time of its intervention only and within the limits of Client's instructions, if any. The Company's sole responsibility is to its Client and this document does not exonerate parties to a transaction from exercising all their rights and obligations under the transaction documents. This document cannot be reproduced except in full, without prior written approval of the Company. Any unauthorized alteration, forgery or falsification of the content or appearance of this document is unlawful and offenders may be prosecuted to the fullest extent of the law. Unless otherwise stated the results shown in this test report refer only to the sample(s) tested and such sample(s) are retained for 30 days only.

Attention: To check the authenticity of testing / inspection report & certificate, please contact us at telephone: (86-755) 8307 1443, or email: [CN.Doccheck@sgs.com](mailto:CN.Doccheck@sgs.com)

No.69, Block 1159, East Kang Qiao Road, Pudong District, Shanghai, China. 201319 t (86-21) 61196300 f (86-21) 61191853/68183920 www.sgs.com.cn  
中国·上海·浦东康桥东路1159弄69号 邮编: 201319 t (86-21) 61196300 f (86-21) 61191853/68183920 e [sgs.china@sgs.com](mailto:sgs.china@sgs.com)

## TEST REPORT

No. : SHIN160903107CCM

Date : Sep. 14, 2016

Page: 4 of 6

Remark:

1. The weight of the loading beams is 400.83kg(The maximum load includes the weight of loading beams).
2. The extension height of the base jack and u-head is 12".
3. Test height:19'9.7"

Statement: Unless otherwise stated the results shown in this test report refer only to the sample(s) tested.

Test photos:



Frame scaffolding assembly

\*\*\*\*\* To be continued\*\*\*\*\*



SGS-CSTC (Shanghai) Technical Services (Shanghai) Co., Ltd.  
Testing Center Commercial Construction Material Laboratory

Unless otherwise agreed in writing, this document is issued by the Company subject to its General Conditions of Service printed overleaf, available on request or accessible at <http://www.sgs.com/en/Terms-and-Conditions.aspx> and, for electronic format documents, subject to Terms and Conditions for Electronic Documents at <http://www.sgs.com/en/Terms-and-Conditions/Terms-e-Documents.aspx>. Attention is drawn to the limitation of liability, indemnification and jurisdiction issues defined therein. Any holder of this document is advised that information contained hereon reflects the Company's findings at the time of its intervention only and within the limits of Client's instructions, if any. The Company's sole responsibility is to its Client and this document does not exonerate parties to a transaction from exercising all their rights and obligations under the transaction documents. This document cannot be reproduced except in full, without prior written approval of the Company. Any unauthorized alteration, forgery or falsification of the content or appearance of this document is unlawful and offenders may be prosecuted to the fullest extent of the law. Unless otherwise stated the results shown in this test report refer only to the sample(s) tested and such sample(s) are retained for 30 days only.

Attention: To check the authenticity of testing / inspection report & certificate, please contact us at telephone: (86-755) 8307 1443, or email: [CN.Doccheck@sgs.com](mailto:CN.Doccheck@sgs.com)

No.69, Block 1159, East Kang Qiao Road, Pudong District, Shanghai, China. 201319 t (86-21) 61196300 f (86-21) 61191853/68183920 www.sgs.com.cn  
中国·上海·浦东康桥东路1159弄69号 邮编: 201319 t (86-21) 61196300 f (86-21) 61191853/68183920 e sgs.china@sgs.com

## TEST REPORT

No. : SHIN160903107CCM

Date : Sep. 14, 2016

Page: 5 of 6



Load frame



In test



Sample 1 after test

\*\*\*\*\* To be continued\*\*\*\*\*



SGS-CSTC Shanghai Technical Services Co., Ltd.  
Testing Center Commercial Construction Material Laboratory

Unless otherwise agreed in writing, this document is issued by the Company subject to its General Conditions of Service printed overleaf, available on request or accessible at <http://www.sgs.com/en/Terms-and-Conditions.aspx> and, for electronic format documents, subject to Terms and Conditions for Electronic Documents at <http://www.sgs.com/en/Terms-and-Conditions/Terms-e-Documents.aspx>. Attention is drawn to the limitation of liability, indemnification and jurisdiction issues defined therein. Any holder of this document is advised that information contained hereon reflects the Company's findings at the time of its intervention only and within the limits of Client's instructions, if any. The Company's sole responsibility is to its Client and this document does not exonerate parties to a transaction from exercising all their rights and obligations under the transaction documents. This document cannot be reproduced except in full, without prior written approval of the Company. Any unauthorized alteration, forgery or falsification of the content or appearance of this document is unlawful and offenders may be prosecuted to the fullest extent of the law. Unless otherwise stated the results shown in this test report refer only to the sample(s) tested and such sample(s) are retained for 30 days only.

Attention: To check the authenticity of testing / inspection report & certificate, please contact us at telephone: (86-755) 8307 1443, or email: [CN.Doccheck@sgs.com](mailto:CN.Doccheck@sgs.com)

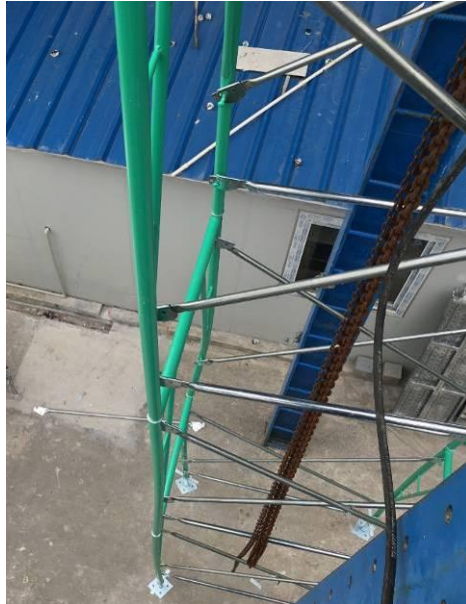
No.69, Block 1159, East Kang Qiao Road, Pudong District, Shanghai, China. 201319 t (86-21) 61196300 f (86-21) 61191853 / 68183920 www.sgs.com.cn  
中国·上海·浦东康桥东路1159弄69号 邮编: 201319 t (86-21) 61196300 f (86-21) 61191853 / 68183920 e [sgs.china@sgs.com](mailto:sgs.china@sgs.com)

## TEST REPORT

No. : SHIN160903107CCM

Date : Sep. 14, 2016

Page: 6 of 6



Sample 2 after test



Sample 3 after test

\*\*\*\*\* End of report \*\*\*\*\*



SGS-CSTC Shanghai Technical Services Co., Ltd.  
Testing Center Commercial Construction Material Laboratory

Unless otherwise agreed in writing, this document is issued by the Company subject to its General Conditions of Service printed overleaf, available on request or accessible at <http://www.sgs.com/en/Terms-and-Conditions.aspx> and, for electronic format documents, subject to Terms and Conditions for Electronic Documents at <http://www.sgs.com/en/Terms-and-Conditions/Terms-e-Documents.aspx>. Attention is drawn to the limitation of liability, indemnification and jurisdiction issues defined therein. Any holder of this document is advised that information contained hereon reflects the Company's findings at the time of its intervention only and within the limits of Client's instructions, if any. The Company's sole responsibility is to its Client and this document does not exonerate parties to a transaction from exercising all their rights and obligations under the transaction documents. This document cannot be reproduced except in full, without prior written approval of the Company. Any unauthorized alteration, forgery or falsification of the content or appearance of this document is unlawful and offenders may be prosecuted to the fullest extent of the law. Unless otherwise stated the results shown in this test report refer only to the sample(s) tested and such sample(s) are retained for 30 days only.

Attention: To check the authenticity of testing / inspection report & certificate, please contact us at telephone: (86-755) 8307 1443, or email: [CN.Doccheck@sgs.com](mailto:CN.Doccheck@sgs.com)

No.69, Block 1159, East Kang Qiao Road, Pudong District, Shanghai, China. 201319 t (86-21) 61196300 f (86-21) 61191853/68183920 www.sgs.com.cn  
中国·上海·浦东康桥东路1159弄69号 邮编: 201319 t (86-21) 61196300 f (86-21) 61191853/68183920 e sgs.china@sgs.com